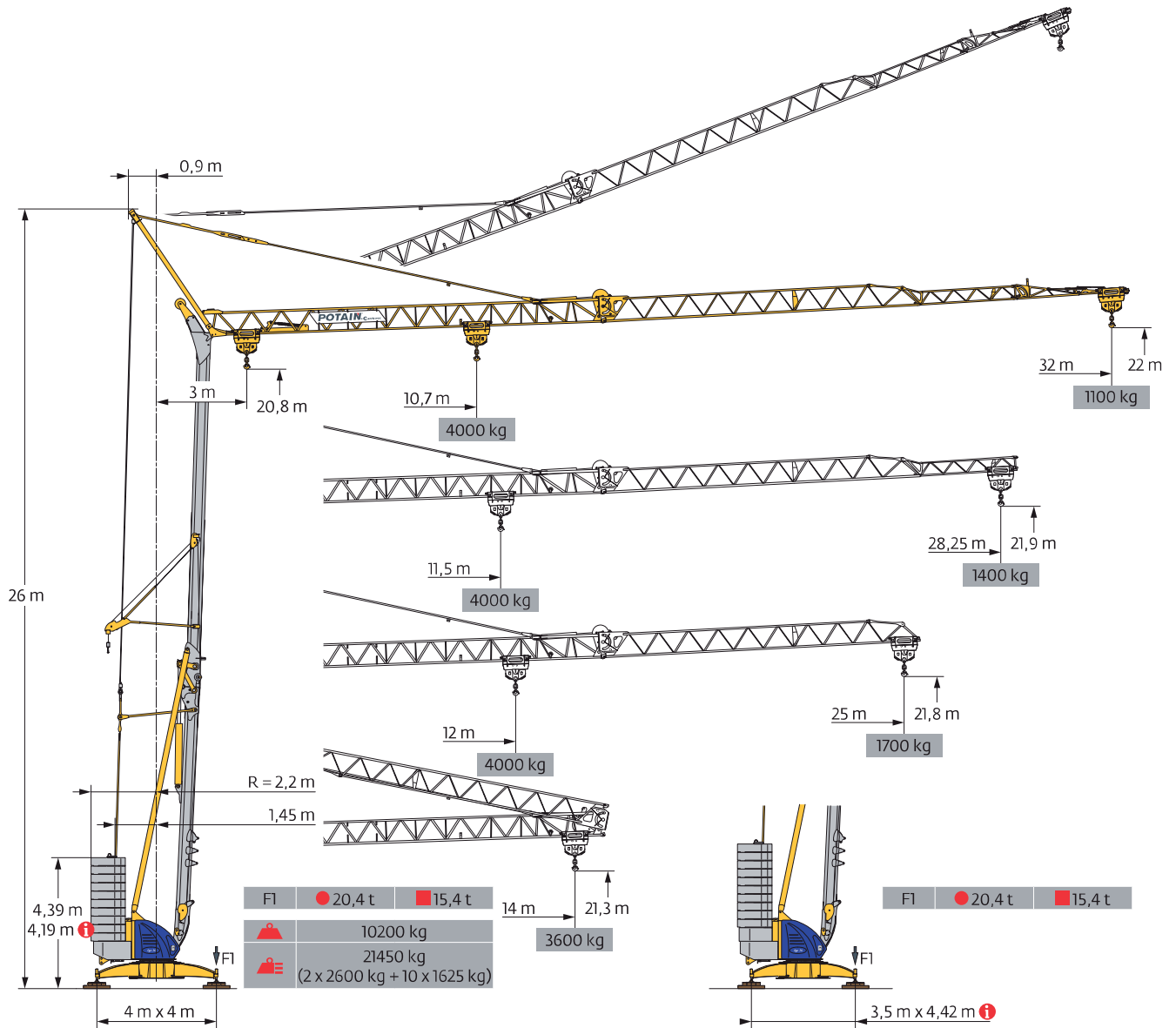
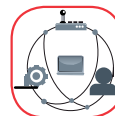


POTAIN IGO 36

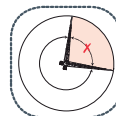
Turmdrehkran



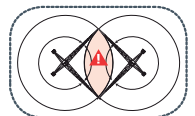
SmartCom



Top Zone



Top Tracing II



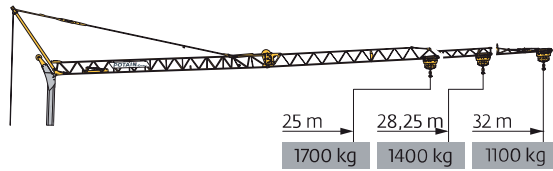
CE EN 14439 C25-D25
EN 14439 C50-D50
FEM 1.001-A3



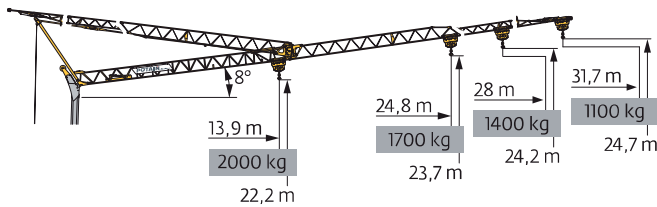
INFO 089/800 75 655



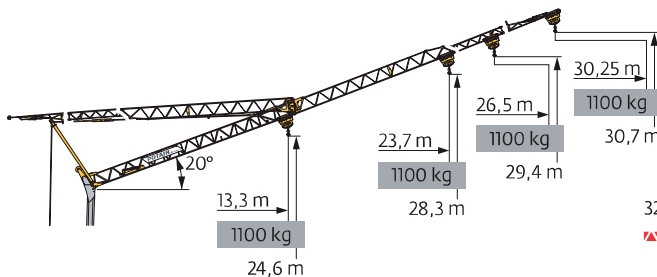
Courbes de charges / Lastkurven / Load curves / Curvas de cargas / Curve di carico
 Curvas de carga / Кривые нагрузок



32 m	3	▶	12,87	13	14	m	10,7	11	12	13	14	15	16	17	18	18,5	19	19,5	20	22	25	27	30	32	m
▲▲▲			4000	3950	3600	kg	4000	3870	3460	3125	2845	2610	2410	2230	2080	2000	1940	1880	1820	1615	1375	1250	1090	1000	kg
						kg										2000	1940	1880	1820	1615	1375	1250	1090	1000	kg
						kg											2000	1940	1730	1485	1350	1190	1100		
28,25 m	3	▶	12,87	13	14	m			11,5	12	13	14	15	16	17	18	19	20	21	22	25	27	28,25	m	
▲▲▲			4000	3950	3600	kg			4000	3790	3420	3120	2860	2640	2450	2280	2135	2000	1885	1780	1520	1375	1300	kg	
						kg												2000	1885	1780	1520	1375	1300	kg	
						kg													2000	1890	1620	1480	1400		
25 m	3	▶	12,87	13	14	m			12	13	14	15	16	17	18	19	20	20,8	21	21,8	23	25	m		
▲▲▲			4000	3950	3600	kg			4000	3600	3280	3010	2775	2580	2400	2250	2110	2000	1985	1895	1775	1600	kg		
						kg													2000	1985	1895	1775	1600	kg	
						kg														2000	1875	1700			



32 m	3	▶	18,3	19	19,5	21	23	25	26	28	30	31,7	m
▲▲▲			2000	1910	1845	1685	1505	1355	1290	1175	1075	1000	kg
													kg
28,25 m	3	▶		19,8	20,8	21	23	25	26	28	m		
▲▲▲				2000	1890	1860	1660	1500	1425	1300	kg		
											kg		
25 m	3	▶		20,7	21,6	23	24,8	m					
▲▲▲				2000	1895	1755	1600	kg					
								kg					








32 m	3	▶										30,25	m
▲▲▲												1000	kg
												1100	kg
28,25 m	3	▶										26,5	m
▲▲▲												1000	kg
												1100	kg
25 m	3	▶										23,7	m
▲▲▲												1000	kg
												1100	kg



EN 14439 C25-D25
 EN 14439 C50-D50
 FEM 1.001-A3



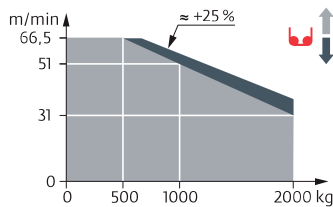
INFO 089/800 75 655

Mécanismes / Triebwerke / Mechanisms / Mecanismos / Meccanismi
 Mecanismos / Механизмы

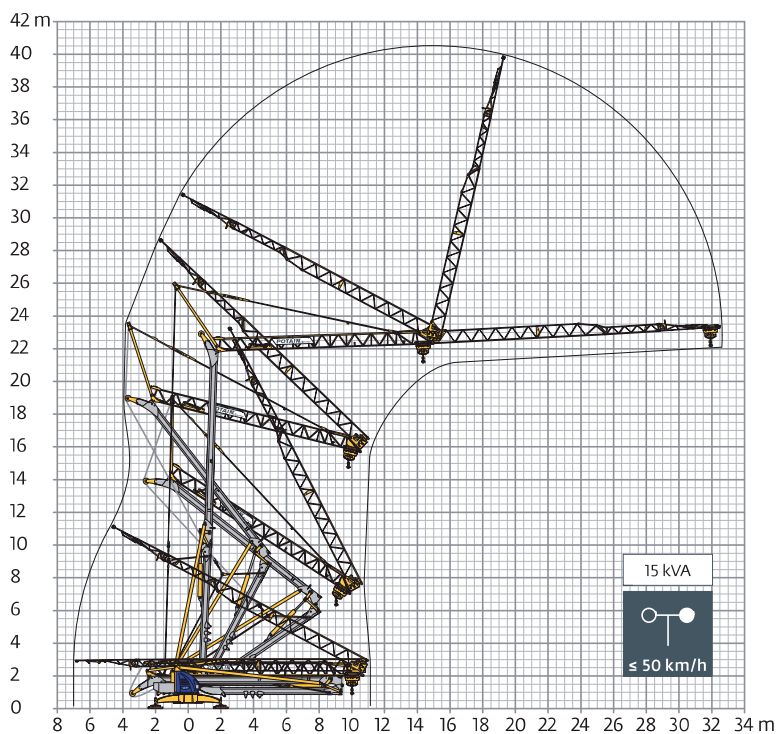
400 V - 50 Hz 480 V - 60 Hz												ch - PS hp	kW	
	15 LVF 10 Optima	m/min	3,6	18	31	51	66,5	1,8	9	15,5	25,5	33	15	11
		kg	2000	2000	2000	1000	500	4000	4000	4000	2000	1000		
	3 DVF 5	m/min	15 - 30 - 41									3	2,2	
	RVF 41 Optima+	tr/min U/min rpm	0 → 0,8									4	3	

 IEC 60204-32	 kVA
400 V (+10% -10%) 50 Hz / 480 V (+6% -10%) 60 Hz	15 kVA

15 LVF 10 Optima



Montage / Montage / Erection / Montaje / Montaggio
 Montagem / Монтаж



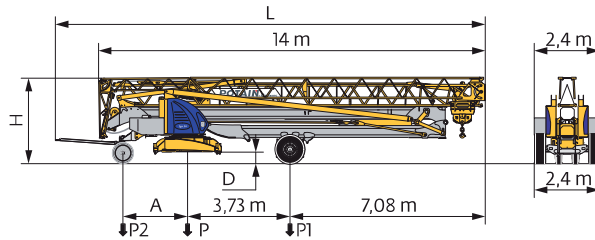
EN 14439 C25-D25
 EN 14439 C50-D50
 FEM 1.001-A3



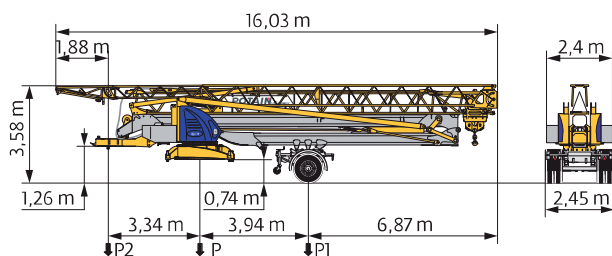
INFO 089/800 75 655



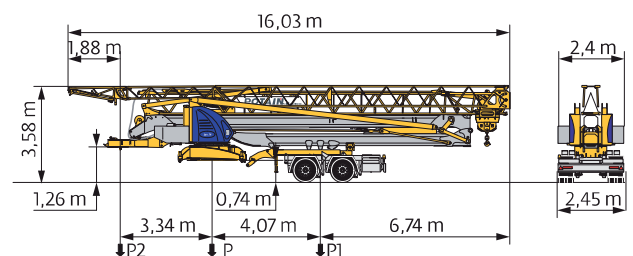
Transport / Transport / Transport / Transporte / Trasporto
Transporte / Транспортировка



	km/h	A (m)	D (m)	H (m)	L (m)	P (kg)	P1 (kg)	P2 (kg)
DS62/S120	10	2,35	0,36/0,21	3,2/3,05	15,48	16220	10290	5930
DJ100/S125	25	2,45	0,38/0,23	3,22/3,07	15,77	16230	10410	5820



	km/h	P (kg)	P1 (kg)	P2 (kg)
SL121/J135	25	17480	11980	5500



	km/h	P (kg)	P1 (kg)	P2 (kg)
SL122/J215M (EBS)	80	18555	12867	5688

FR

- R** Rayon de giration
- i** Nous consulter
- Réactions en service
- Réactions hors service
- ▲** Poids à vide, sans lest, sans trains de transport, avec flèche maxi, et hauteur standard.
- Poids total du lest
- Équipements standards
- Équipements optionnels
- ♦** Levage
- Distribution
- Orientation
- kVA** Puissance requise

DE

- Schwenk radius
- Auf Anfrage
- Reaktionskräfte in Betrieb
- Reaktionskräfte außer Betrieb
- Gewicht ohne Last, ohne Ballast, ohne Transportachsen, mit max. Auslager und Standardhöhe
- Ballast-Gesamtgewicht
- Standardausrüstungen
- Sonderausrüstungen
- Heben
- Katzfahren
- Schwenken
- Erforderliche Leistung

EN

- Rear slewing radius
- Consult us
- Reactions in service
- Reactions out of service
- Weight without load, without ballast, without transport axes, with max. jib and standard height
- Total ballast weight
- Standard equipment
- Options
- Hoisting
- Trolleying
- Slewing
- Required power

ES

- Radio de giro
- Consultarnos
- Reacciones en servicio
- Reacciones fuera de servicio
- Peso en vacío, sin lastre, sin trenes de transporte con flecha y altura estándar
- Peso total del lastre
- Equipamiento de serie
- Equipamiento opcional
- Elevación
- Distribución
- Orientación
- Potencia Necesaria

IT

- Raggio di rotazione
- Consultateci
- Reazioni in servizio
- Reazioni fuori servizio
- Peso a vuoto, senza zavorra, senza assali di trasporto, con braccio max e altezza standard.
- Peso totale della zavorra
- Equipaggiamento standard
- Equipaggiamento in opzione
- Sollevamento
- Distribuzione
- Rotazione
- Potenza richiesta

PT

- Raio de rotação
- Consulte-nos
- Reacções em serviço
- Reacções fora de serviço
- Peso em vazio, sem lastro, sem eixos de transporte com lança máxima e altura standard.
- Peso total do lastro
- Equipamento de série
- Equipamento opcional
- Elevação
- Distribuição
- Rotação
- Potência Necessária

RU

- Задний габарит
- Проконсультируйтесь у нас
- Реакция при работе
- Реакция в локте
- Вес без груза, без балласта, без осей для транспортировки, с максимальным вылетом стрелы и стандартной высотой
- Общий вес балласта
- Стандартное оборудование
- Дополнительное оборудование (опция)
- Подъем
- Перемещение по стреле
- Поворот
- Потребляемая мощность

⚠ Document commercial non contractuel. Pour toute information technique se référer à la notice correspondante. Unverbindliches Vertriebsdokument. Für technische Informationen, siehe die entsprechenden Anweisungen. This commercial document is not legally binding. For any technical information, please refer to the corresponding instructions. Documento comercial non contractuel. Para cualquier información técnica, ver la noticia correspondiente. Documento commerciale non vincolante, per tutte le informazioni tecniche fare riferimento al catalogo istruzioni. Documento comercial não contratual. Para qualquer informação técnica complementar consultar as respectivas instruções. Этот коммерческий документ не является юридически обязательным. Для получения технической информации, см. соответствующие инструкции.

STIROB
Baustelleneinrichtung

Billberg 5
82266 Inning a. Ammersee
Tel. 08143 / 99125-25
Fax 08143 / 99125-05
info@stirob.com
www.stirob.com

Manitowoc

Americas
Manitowoc, Wisconsin, USA
Tel: +1 920 684 6621
Fax: +1 920 683 6277

Shady Grove, Pennsylvania, USA
Tel: +1 717 597 8121
Fax: +1 717 597 4062

www.manitowoccranes.com

Europe, Middle East, Africa
Dardilly, France
Tel: +33 (0)4 72 18 20 20
Fax: +33 (0)4 72 18 20 00

China
Shanghai, China
Tel: +86 21 6457 0066
Fax: +86 21 6457 4955

Greater Asia-Pacific
Singapore
Tel: +65 6264 1188
Fax: +65 6862 4040



INFO 089/800 75 655

